



# PRODUCT BULLETIN 11

## TAP Static Cling Application Instructions



### Recommended Tools: (Sold Separately)

- Bottled water (not tap water)
- No-tears baby shampoo
- Spray bottle (trigger sprayer preferable)
- Break-away utility knife & blades ) for cutting vinyl
- Window scraper (for cleaning the glass)
- Ruler or tape measure
- WypAll lint-free cloth or MicroFibre Cloth (for cleaning the glass and vinyl)
- 5-way tool for trimming

### Before You Begin:

**TAP Glare Control Static-Cling** films should only be applied as directed:

- Apply to the **INSIDE** surface of standard 1/8" single-pane windows or exterior removable storm panes.
- Apply to the **INSIDE** surface of **FLAT** plastic or plexiglass windows or skylights (do not put on domes).
- Apply to the **OUTSIDE** surface of sealed dual-pane windows or windows with interior storm panes.

Applying static-cling vinyl is a simple process, with only a few basic steps. However, patience and preparation are very important. Before beginning this project, please read the instructions completely and carefully, perhaps using a small piece of vinyl to practice the steps before you actually tint a window. First time users will improve their skills by tinting a few, small windows. Start with smaller windows before applying film to larger windows, such as patio doors which may require two people.

**CAUTION:** Tinted motor vehicle windows must comply with state and local laws. Dark tinting may reduce visibility outside during poor lighting conditions. Use care to avoid accidents.

Because we have no control over working conditions or methods, products should be tested to establish suitability for your individual applications. Our liability is limited to the price of this products.

### Preparation

- Fill a pump or trigger spray bottle with a soapy water solution made of 1 qt. bottled water, and a 1/4 tsp of a no-tears baby shampoo without conditioner. Do not use hard tap water or detergent, which can leave spots under the film. **VERY IMPORTANT:** This soapy water solution will serve as a lubricant for the squeegee during glass cleaning, vinyl application, and future cleaning. **CAUTION:** Do not use any household glass cleaner containing ammonia or vinegar to clean the glass or vinyl; such cleaners can damage the vinyl. However, extremely greasy or smoke-covered windows may need to be cleaned first with glass cleaner then rinse thoroughly with the soapy water solution.
- Use a single-edge window scraper to clean the window. A small utility knife with breakaway blades is the best tool for trimming vinyl. **NOTE:** vinyl can dull a blade edge quickly; and a dull blade can tear vinyl. Plan to use a new blade after every 10 feet of vinyl that you cut.
- A rubber-blade squeegee is necessary to press the vinyl onto the window without creases and to remove the soapy water from the under vinyl. We recommend a smoothee squeegee (4" or 14"

length available). A quality squeegee is a good investment because you will use it to clean the glass, apply the vinyl, and clean the vinyl in the future.

- Use lint-free toweling paper (such as TAP's own WypAll), not paper towels, to clean the windows and absorb squeegeed water.
- To trim the vinyl (Step 5), use the edge of a ruler, plastic card, a wallpaper trimming guide, or a 5-way tool.

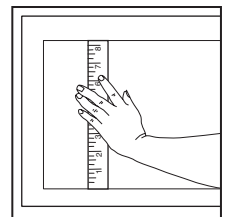
### Special Points to Remember:

- Apply vinyl to cool or shaded windows when glass temperature is between 45-90°F. (For best results, do not apply vinyl in direct sunlight or during freezing weather.)
- During application, keep the window and the vinyl thoroughly wet, and use a flexible rubber squeegee to position the film. (A rigid or hard-edged tool can scratch the vinyl very easily.)
- Work in a dust-free area to prevent debris sticking to the vinyl and being trapped against the window. Turn off fans.
- If bubbles appear at any time, simply peel vinyl away from window, wet the glass and vinyl, and reapply (see step 3)
- The longevity of the vinyl depends upon handling, care, and frequency of use.
- If you plan to remove and reapply the vinyl, keep the paper interleaf sheet.
- For storage, roll up vinyl onto paper interleaf sheet and keep in a cool, dry place.

### Application

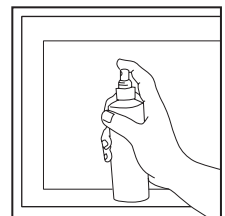
#### 1. Measure the Window

Carefully measure the dimensions of the window before cutting the vinyl. Unroll the vinyl on a clean, flat surface. Cut the vinyl to leave the least waste. You have two options: (1) Precut the vinyl to exact dimensions of the exposed glass surface less 1/16" on all four sides, or (2) Cut the vinyl at least 1" larger on all four sides and trim after film is on the glass (step 5). Either way, try to use at least one of the factory precut-edges.



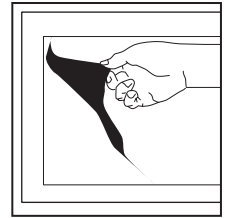
#### 2. Clean the Window Thoroughly

Generously spray the window with the soapy water solution, (You will use this solution throughout the installation process) then use a razor blade to remove any dirt or paint, which is stuck to the window. Use special care cleaning the corners. Re-wet the window, then squeegee downward. Wipe off accumulated dirt from the window gasket with a soft cloth or WypAll. Repeat process until the glass is clean. If possible, also clean the outside to ensure total clarity. (NOTE: Paper coffee filters are lint free and can be used to clean the windows now, and the vinyl late. Remember, the cleaner the glass, the better the final appearance of the applied vinyl.)



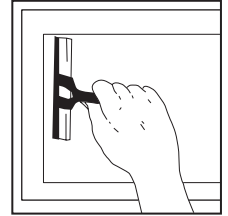
### 3. Apply the Vinyl

Be sure the window is dripping wet: too much solution is better than not enough. Align the top edge of the vinyl to the top edge of the window, then allow the vinyl to lie down onto the window. Use your wet hands to smooth out any wrinkles.



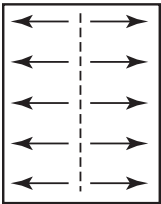
### 4. Spray the outside surface of the vinyl and squeegee it carefully and firmly

Spray the entire surface of the vinyl facing you with the soapy solution to lubricate its surface. Using a clean rubber squeegee, begin squeegeeing the water and air out from under the vinyl. To do this, start about 2" from the top and side and squeegee from left to right. Second, to set the vinyl on the glass, lightly squeegee the rest of the vinyl downward, but leave the 2" perimeter area un-squeegeed. If you need to remove large air pockets, rewet the top of the vinyl and squeegee again. If the squeegee drags, respray the solution on the top of the vinyl.



### 5. Trim edges of vinyl and squeegee dry

Use a sharp razor blade or utility knife and a 1/16" wide guide (a 5-way tool is ideal for this) to trim the vinyl around the four perimeter edges of the vinyl. (If you align the factory edge of the vinyl with the top edge of the glass, you will only need to trim the side and bottom edges.) This gap is essential to the proper thermal expansion of the glass and permits you to completely squeegee the water and air from under the vinyl. Rewet the entire vinyl surface and squeegee again. Press very firmly to remove most of the soapy solution.

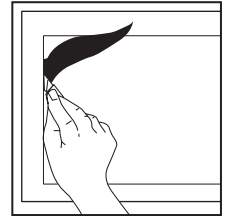


Finally, rewet the vinyl and this time, imagine an invisible line dividing the window from top to bottom.

Starting at the top of the window, squeegee from the center to the left. Then from the center to the right. Repeat this process until you reach the bottom of the window. Use WypAll or paper coffee filters to absorb water from around the edges of the vinyl. Very small water bubbles should evaporate within 10 days.

### Cleaning and Care

Always clean the vinyl with the same soapy solution and the squeegee you used to apply it. Use a lint-free cloth for drying. To avoid scratching the vinyl, DO NOT USE ammonia, vinegar, glass cleaners, or paper towels on the vinyl.



### Removal and Storage

Lightly spray the top 4" of the vinyl with the soapy solution. Align the paper interleaf sheet to match the shape of the vinyl, then press the top edge of the interleaf onto the wet vinyl. Peel the top edge of the vinyl away from the window, then carefully roll the vinyl and interleaf sheet TOGETHER down in the window. Store the vinyl roll in a cool, dry space.

*NOTE: When re-applied, the vinyl may look slightly smaller. The vinyl did not shrink. Firm squeegeeing during re-application will make the vinyl properly fit the window.*

## TAP Plastics

<input type="checkbox"/> Bellevue WA	12021 NE Northrup Way	425 861-0940
<input type="checkbox"/> El Cerrito CA	10760 San Pablo Avenue	510 778-9057
<input type="checkbox"/> Fremont CA	5160 Mowry Avenue	510 796-3550
<input type="checkbox"/> Lynnwood WA	4232 196th St. SW	425 977-4440
<input type="checkbox"/> Mountain View CA	312 Castro Street	650 962-8430
<input type="checkbox"/> Pleasant Hill CA	1478 Contra Costa Blvd	925 798-0420
<input type="checkbox"/> Pleasanton CA	6010-C Johnson Drive	925 460-8214
<input type="checkbox"/> Portland OR	2842 NE Sandy Blvd	503 230-0770
<input type="checkbox"/> Sacramento CA	4538 Auburn Blvd	916 481-7584
<input type="checkbox"/> Sacramento CA	4506 Florin Road	916 429-9551
<input type="checkbox"/> San Francisco CA	154 S. Van Ness Ave	415 864-7360
<input type="checkbox"/> San Jose CA	1212 The Alameda	408 292-8685
<input type="checkbox"/> San Jose CA	1008 Blossom Hill Rd	408 265-6400
<input type="checkbox"/> San Leandro CA	3011 Alvarado Street	510 357-3755
<input type="checkbox"/> San Mateo CA	606 South B Street	650 344-7127
<input type="checkbox"/> San Rafael CA	900 Andersen Drive	415 454-6393
<input type="checkbox"/> Santa Rosa CA	2770 B Santa Rosa Ave	707 544-5772
<input type="checkbox"/> Seattle WA	710 9th Avenue North	206 389-5900
<input type="checkbox"/> Stockton CA	1859 Pacific Avenue	209 937-9300
<input type="checkbox"/> Tigard OR	15957 SW 72nd Avenue	503 620-4960

Printed on recycled paper.



Corporate Office • San Leandro CA • (510) 895-8249

the fantastic plastic place