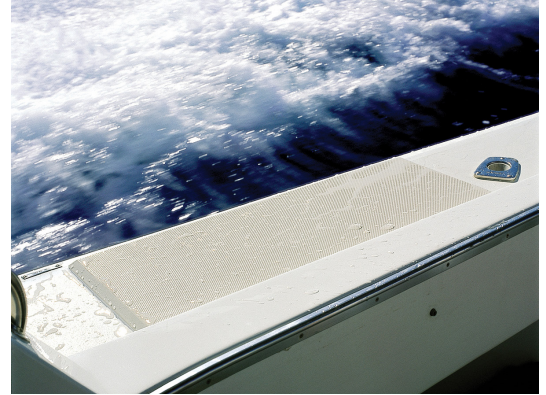




## Marine Products



## The Anti-Skid Marine-Grade Polymer Sheet

King StarBoard® AS is a sure-grip, marine-grade, decking material designed specifically for high-traffic areas. This unique product features a special high-friction surface polymer in a diamond or dot pattern to prevent slipping and promote drainage.

**KING**  
**STARBOARD** AS

---

### Applications

---

- Bow Pulpits
- Decking
- Hatches
- Ladder Steps
- Swim Platforms
- Swimming Pool Grating
- Shower Floors
- Stairways and Entry Ways

## Specifications

### Standard Sheet Size

**in:** 54" x 96"

**mm:** 1371.6mm x 2438mm

### Standard Gauges

**in:** 1/2" | 3/4" | 1"

**mm:** 12.7mm | 19mm | 25.4mm

### Approximate Weight

**lbs:** 90 lbs | 135 lbs | 180 lbs

**kg:** 41kg | 61kg | 81.6kg

**Tolerance information:** Gauges 1/2" up to 1" ±5%  
Length and width plus only at room temperature

Custom sheet sizes, gauges and colors available

## Standard Colors



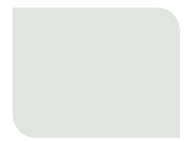
Black



Charcoal Gray



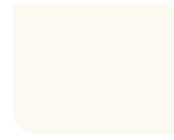
Dolphin Gray



Light Gray



Sansshade



Seafoam



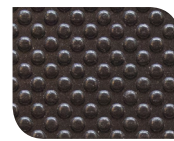
White/White

Note: Color accuracy can vary considerably on computer monitors and printers.  
Please consult your distributor for a product sample before making critical color choices.

## Textures



Diamond



Dot

Properties	Units	ASTM	Nominal Values
Density	g/cc	D1505	0.955
Tensile Strength @ Yield	psi	D638	>4,100
Tensile Modulus	psi	D638	225,000
Elongation @ Break	%	D638	>600
Elongation @ Yield	%	D638	9.8
Flexural Modulus	psi	D790	185,000
Flexural Stress @ 5% Strain	psi	D790	3,810
Compressive Properties 10% Strain	psi	D695	4,000
Durometer	Shore D	D2240	66
Tensile Impact	ft.lbs./in. <sup>2</sup>	D1822	115
Izod Impact Resistance	ft.lbs./in. <sup>2</sup>	D256	1.1
Brittleness Temp.	°C (°F)	D746	<-76°C (<-105°F)
Vicat Softening Temp.	°C (°F)	D1525	123°C (253°F)
Heat Deflection Temp. 66 psi	°C (°F)	D648	75°C (167°F)
Screw and Nail Withdrawal	lbs	D1761	657 & 63
Flammability	Rating	UL94	HB
Slip Resistance (wet)	COF-Wet	D2047	0.62

All values are determined on specimens prepared according to ASTM.

Nominal values should not be interpreted as specifications.

King StarBoard® AS is made entirely from FDA and USDA approved material.

King StarBoard® AS meets ASTM D4976.

The raw material used to make King StarBoard® AS does not contain BPA's or Phthalates.



King Plastic Corporation  
Our Innovation. Your Imagination.®

1100 N. Toledo Blade Blvd. | North Port, FL 34288 USA  
P: 941.493.5502 | F: 941.497.3274 | www.kingplastic.com